

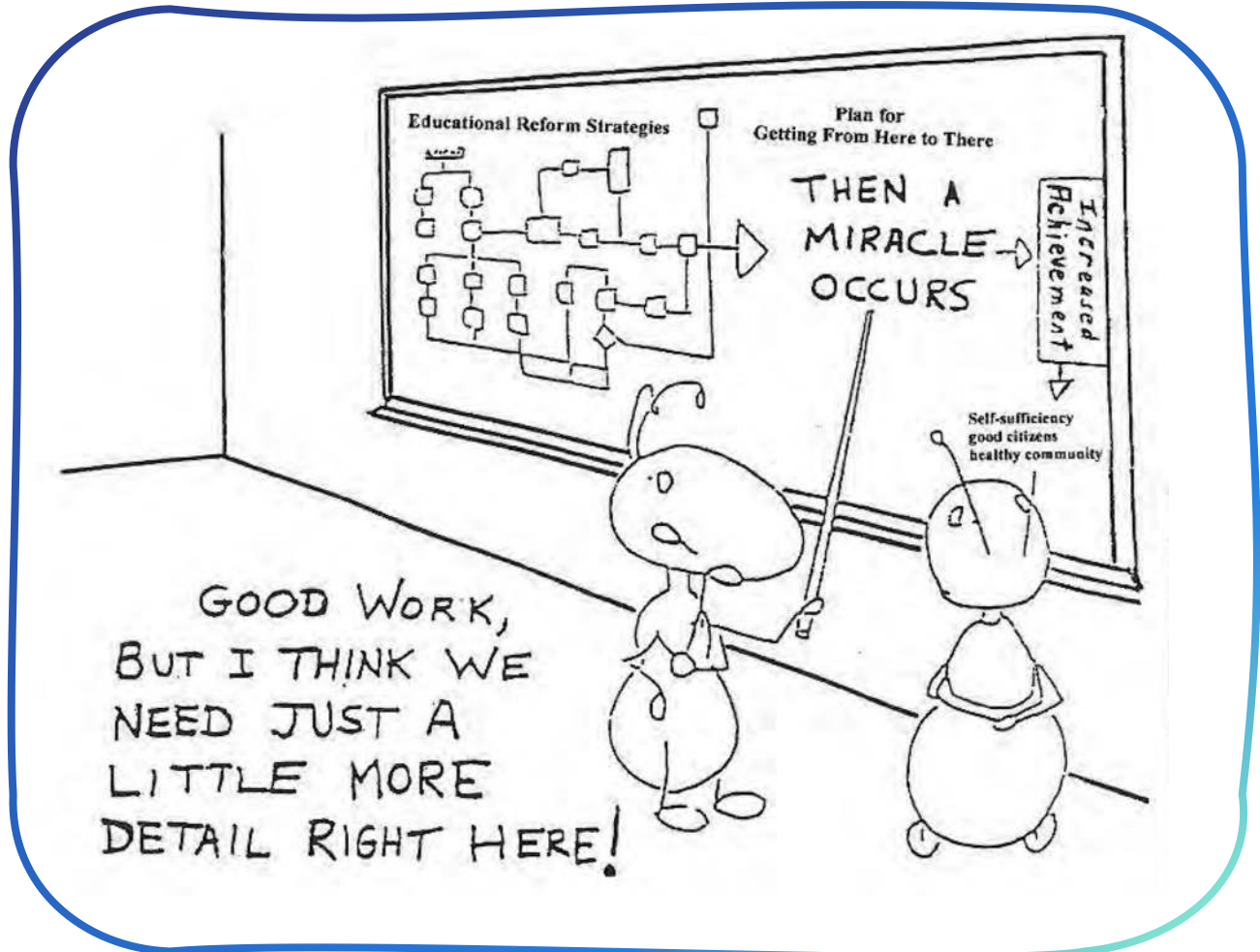
Moving from Principle to Practice





Richard H Long

MSW, MEd

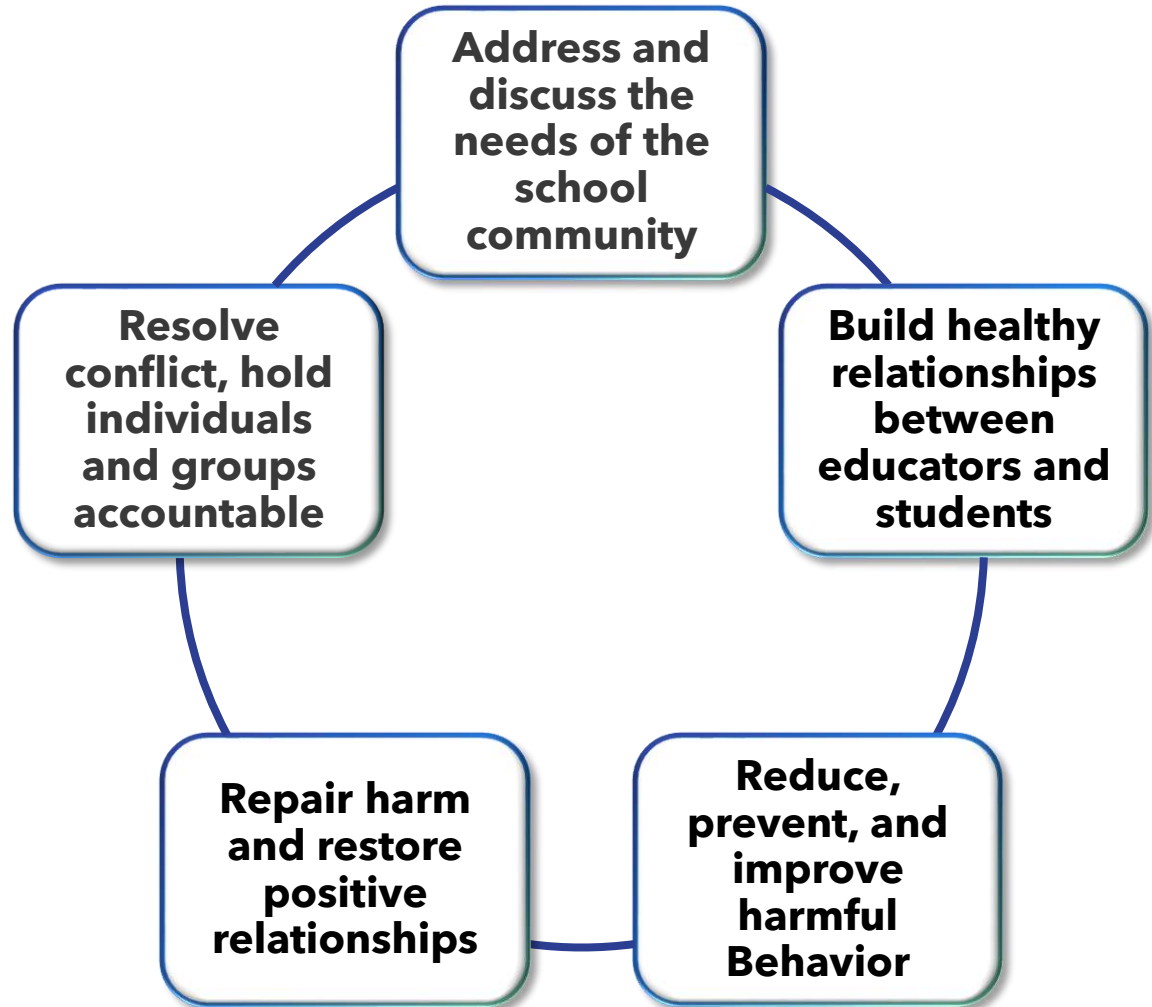


GOOD WORK,
BUT I THINK WE
NEED JUST A
LITTLE MORE
DETAIL RIGHT HERE!

Here's what we are up to today

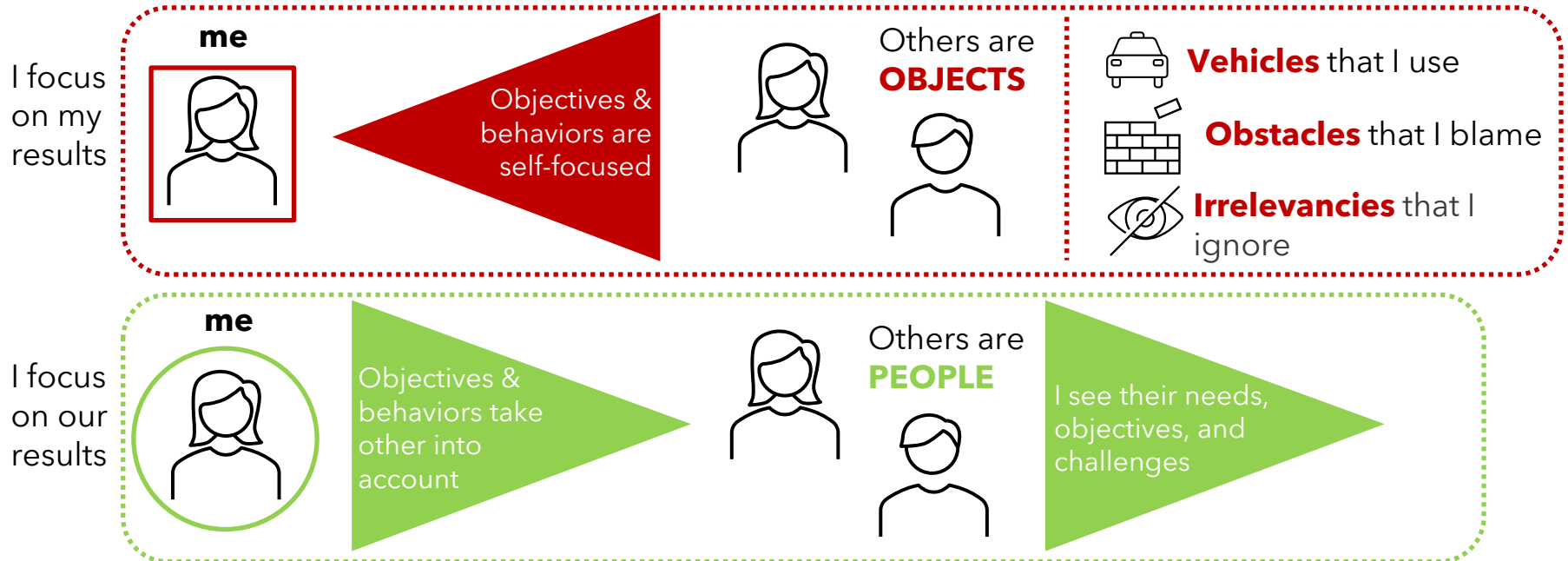
- Refreshers from Rooted in Restorative Practices
- Has Anything Changed?
- Examining Beliefs and Values
- Collaborative Practices

Refresher #1
**Principles of
Restorative
Practices**

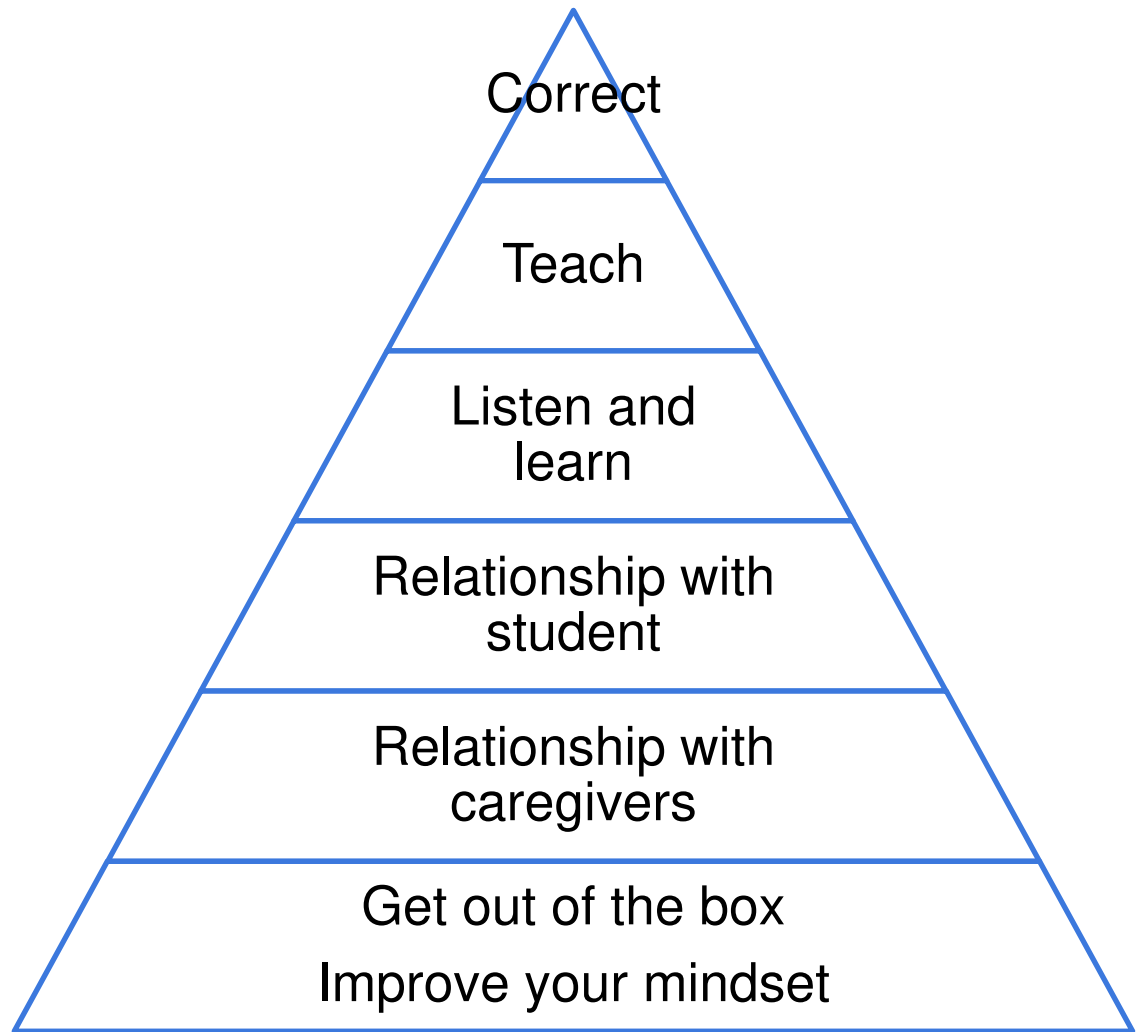


Refresher #2 - Individual Educator Mindset

Inward vs. Outward



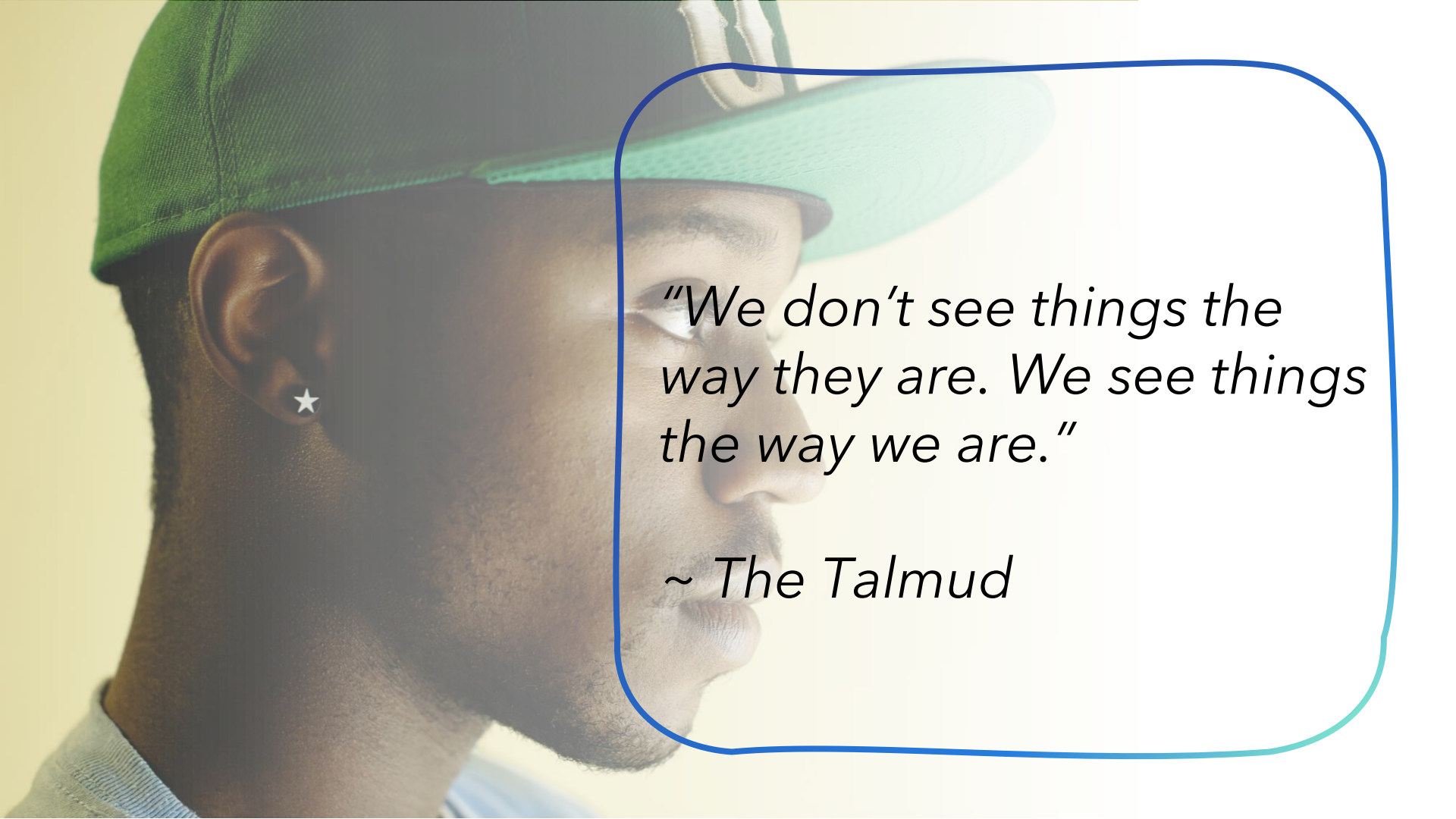
Refresher #3
**Relational
Capacity -
Influence
Pyramid**



What Has Changed?

- Reflect on the 2021-22 school year
- Did anything change in your practice as a result of our Workshop? If so, what? If not, why not?
- Set an intention/goal for today





"We don't see things the way they are. We see things the way we are."

~ The Talmud

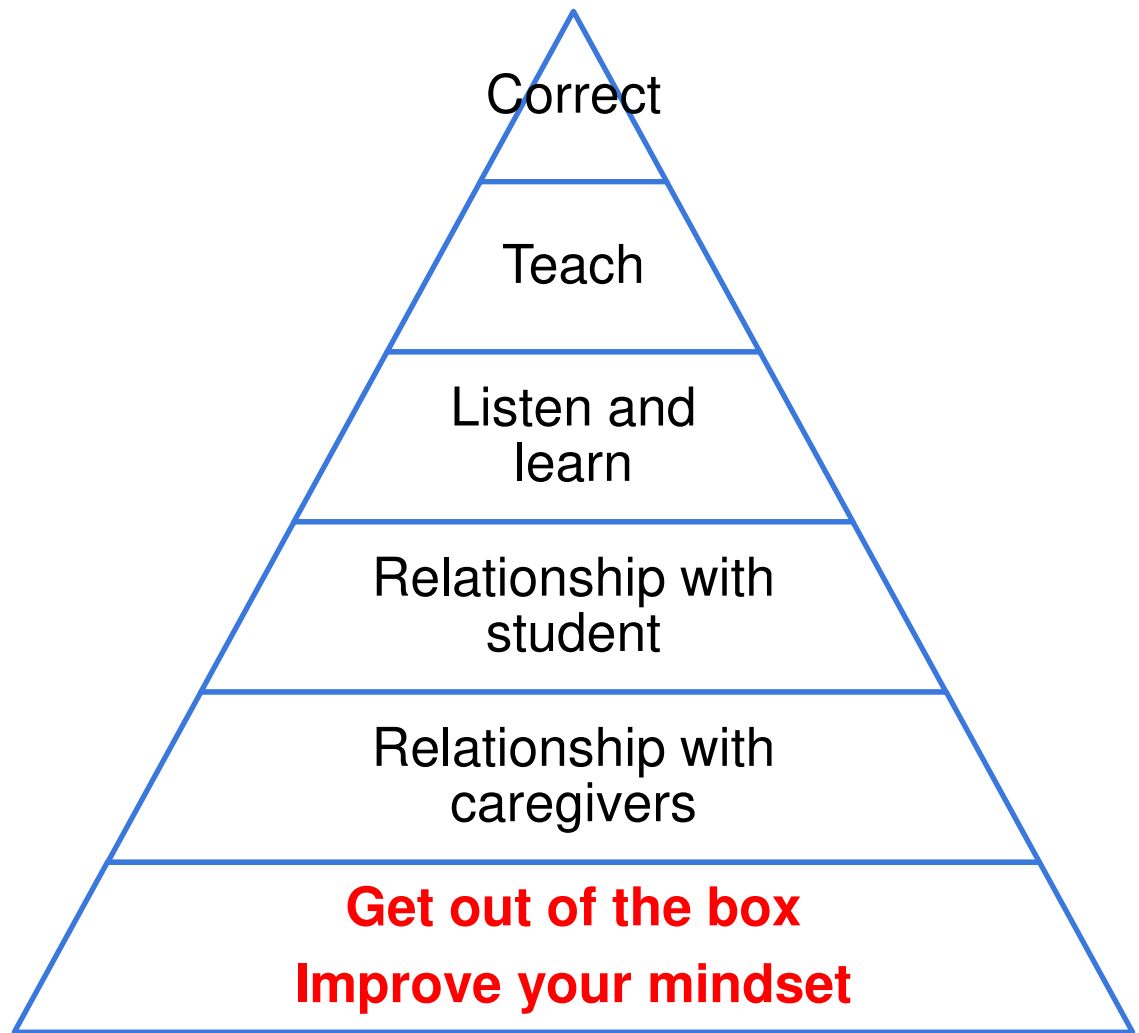
Why do we Need to Examine our Belief System?

- Where do our beliefs/values come from?
- What do our beliefs have to do with the way we teach? Interact with students? Relate to colleagues?
- Beliefs/Values are directly related to our why
- Beliefs/Values create culture

Do our practices in our classrooms/schools match our beliefs/values?

- What would your students think you believe about them?
- What would your co-workers think you believe about them?
- How are you making it abundantly clear that you care about your content area, but care about individual students more?
- What are some strategies to communicate more clearly your why?

Refresher #3
**Relational
Capacity -
Influence
Pyramid**



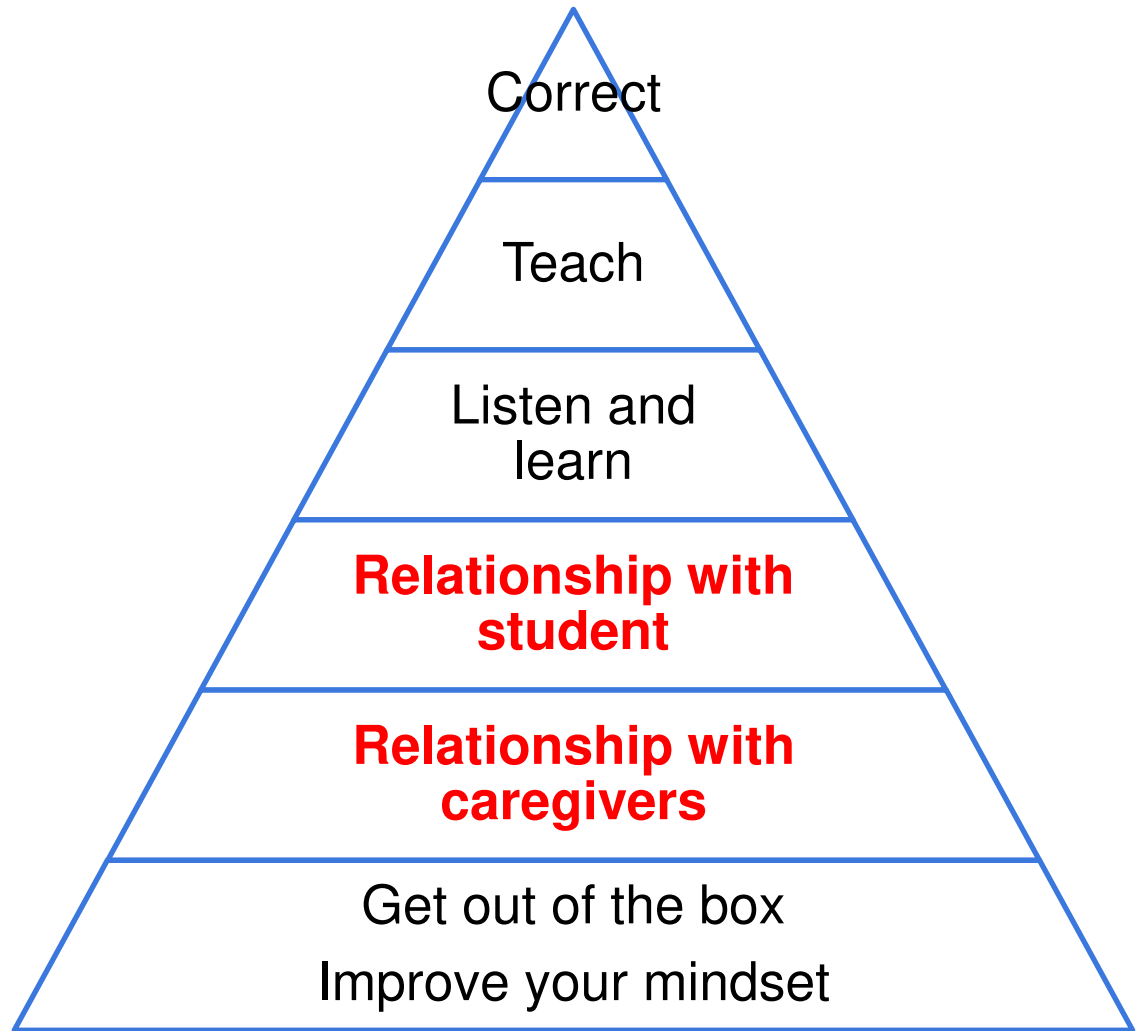
A photograph of a male teacher with glasses and a beard, wearing a blue denim shirt and red pants, standing in a classroom. He is looking towards the camera. In the background, several students are seated at desks, some appearing to be working or resting. The image is overlaid with a blue rounded rectangular border.

Individual Educator Mindset

A Few Questions to Ask Yourself

- 1) How do I see my students, specifically the ones that challenge me?
- 2) What buttons do I have that get pushed in the classroom?
- 3) How do I balance the need for control and the need to engage/connect?

Refresher #3
**Relational
Capacity -
Influence
Pyramid**



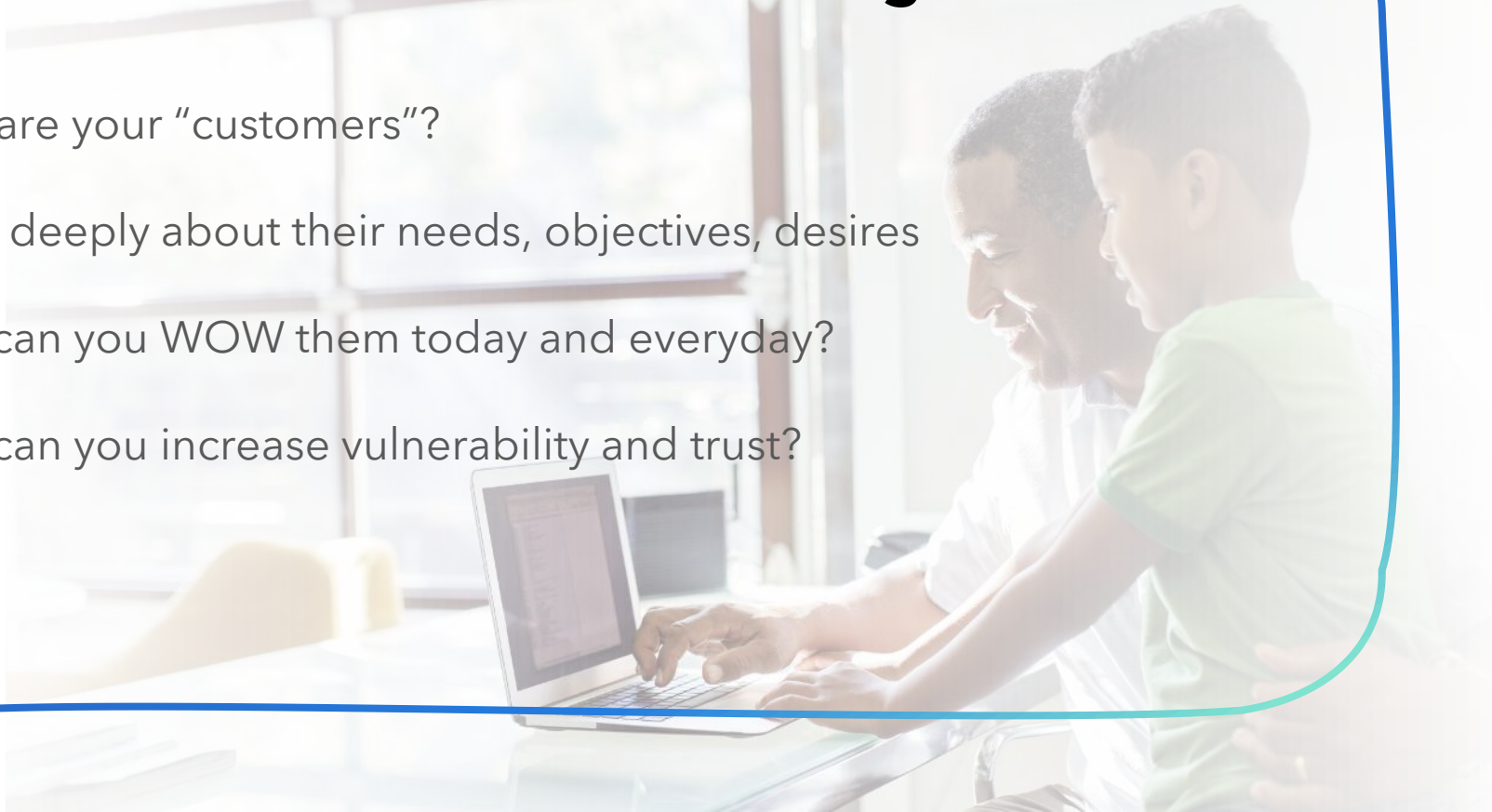
Collaborative Strategies

- Employing a Customer-Service Approach
- Creating brave spaces
- ANASAZI - Walking of We
- WOWing “customers” in every direction

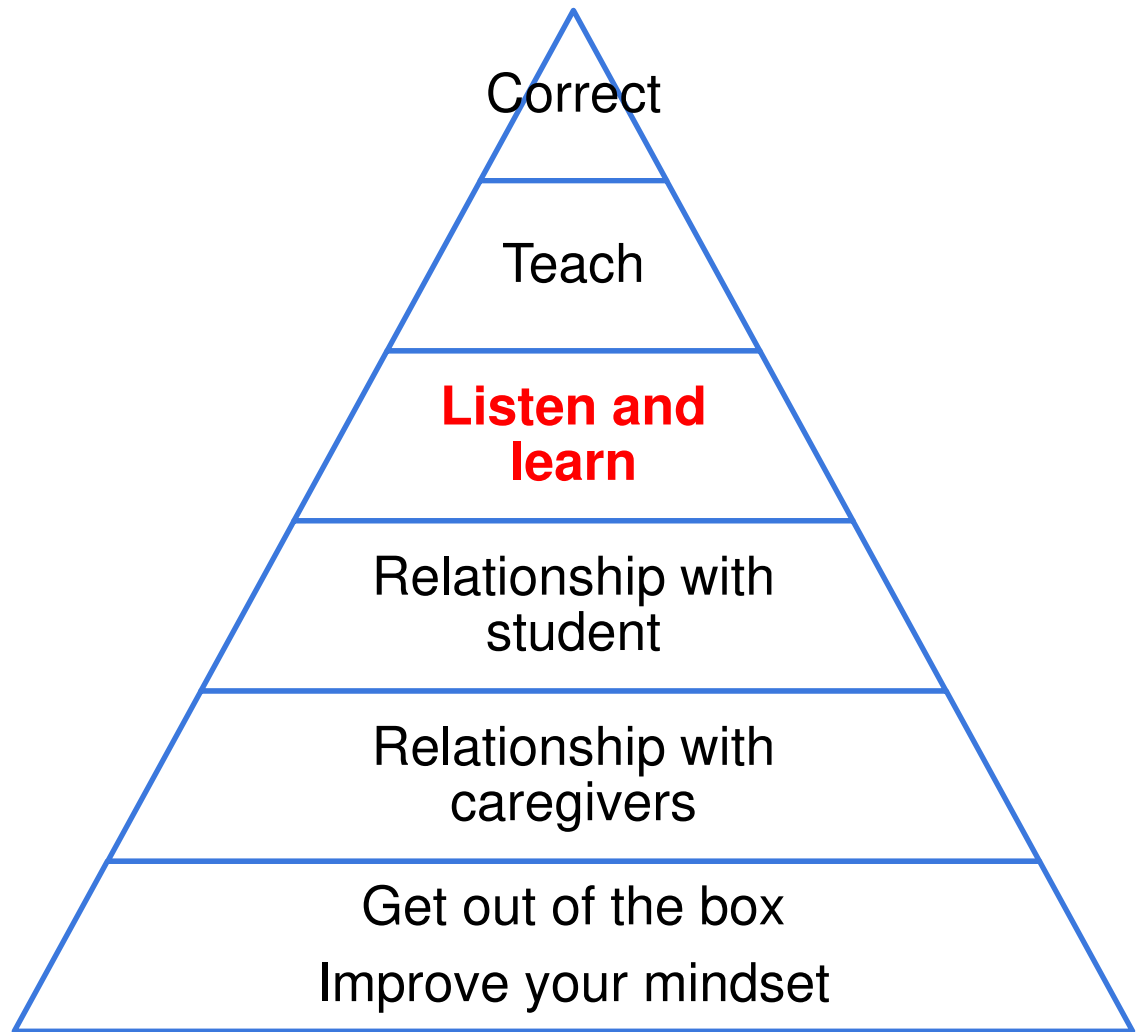


Collaborative Strategies

- Who are your “customers”?
- Think deeply about their needs, objectives, desires
- How can you WOW them today and everyday?
- How can you increase vulnerability and trust?



Refresher #3
**Relational
Capacity -
Influence
Pyramid**



The Most Important Collaborative Strategy

"When we are listened to, it creates us, makes us unfold and expand. Ideas actually begin to grow within us and come to life. You know how if a person laughs at your jokes you become funnier and funnier, and if he does not, every tiny little joke in you weakens up and dies. Well, that is the principle of it. It makes people happy and free when they are listened to."

~Brenda Ueland, *Tell Me More*



Closing Thoughts

"If we want people to fully show up, to bring their whole selves including their unarmored, whole hearts - so that we can innovate, solve problems, and serve people - we have to be vigilant about creating a culture in which people feel safe, seen, heard, and respected."

~Brene Brown

